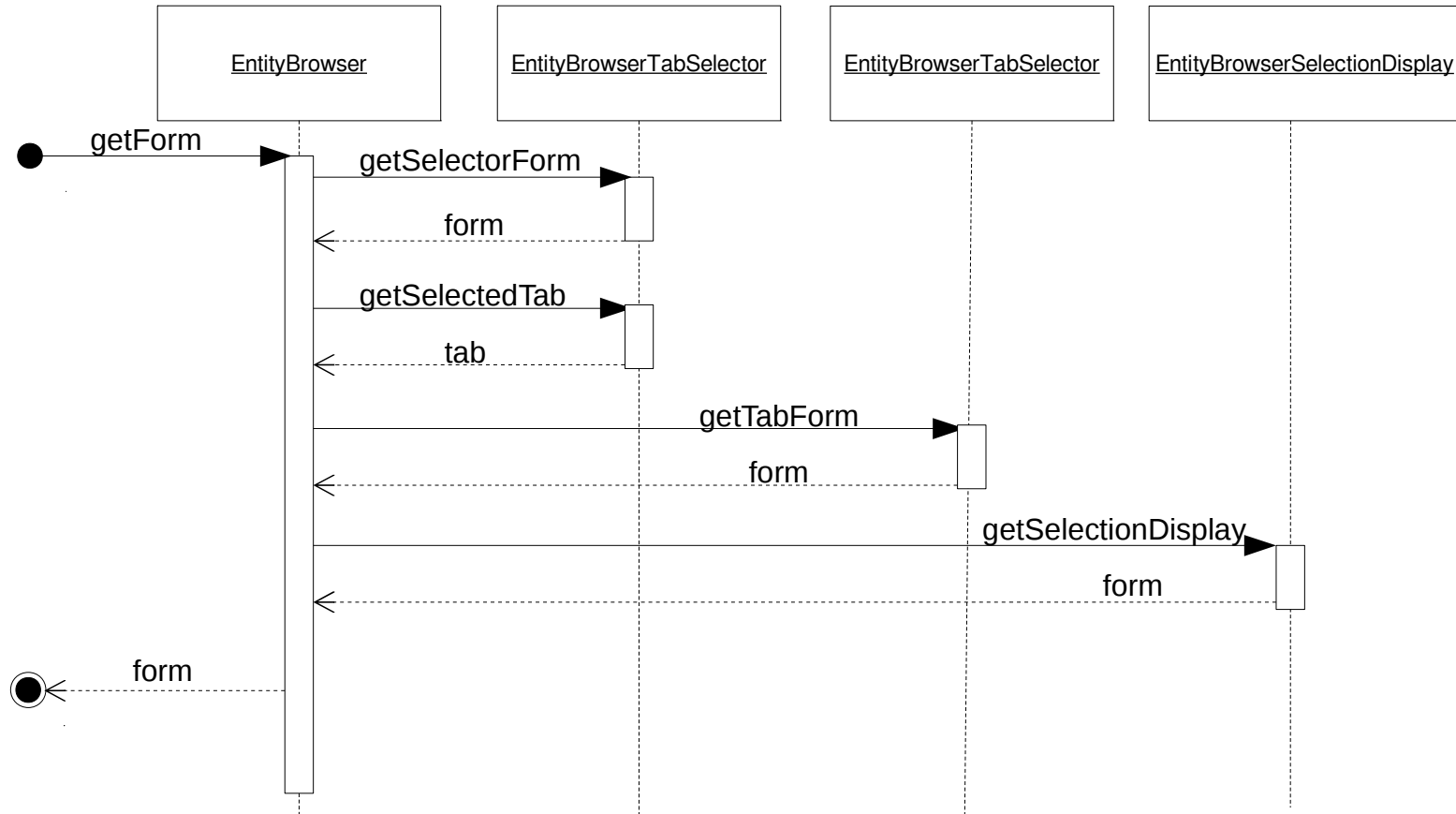
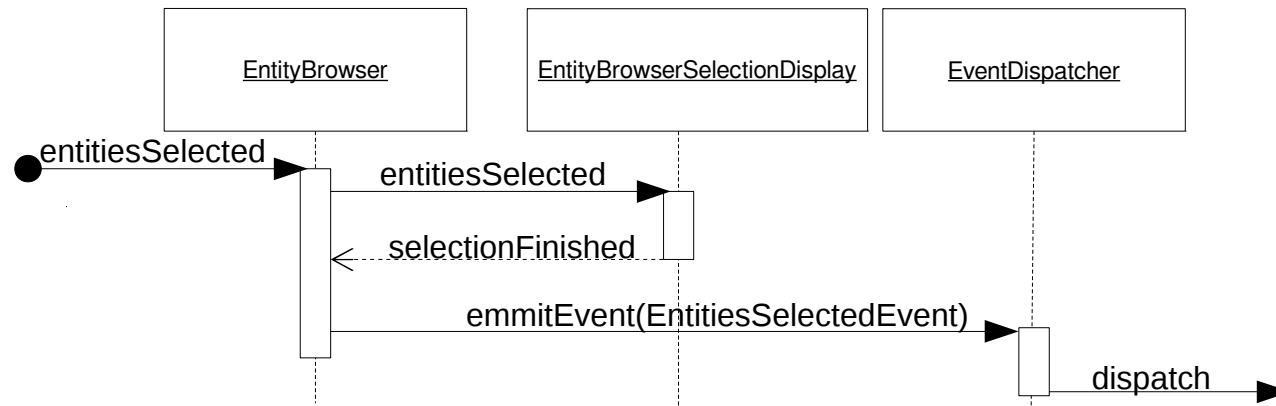


Initial form build



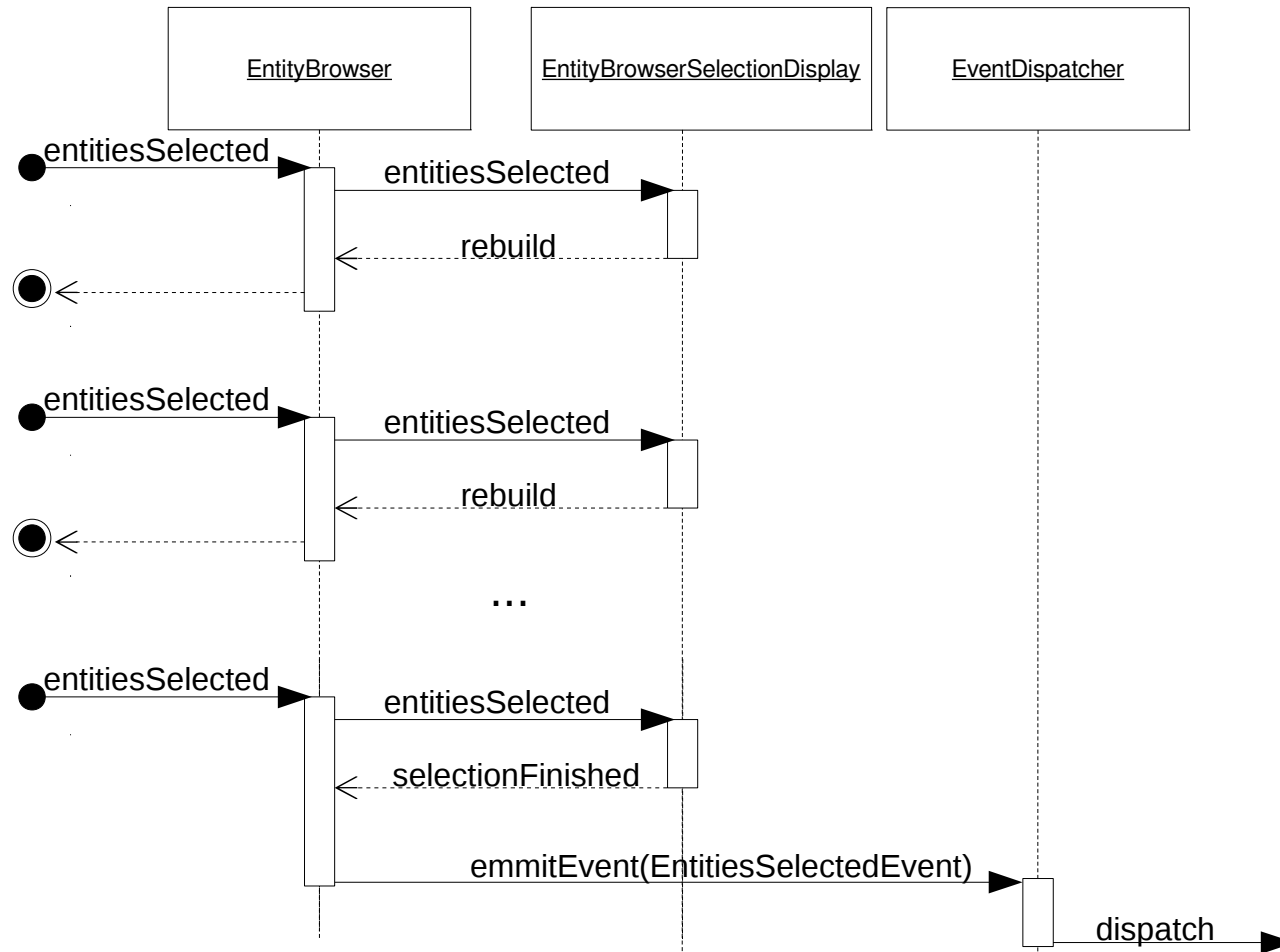
Entites selected (with NoDisplay selection display)



Event subscribers take it from here:

- handle entity selection
- decide what to do (redirect to another page, close modal, ...)

Entites selected (with multi-step selection display)



Event subscribers take it from here:

- handle entity selection
- decide what to do (redirect to another page, close modal, ...)

Entity browser tab selector examples

Tab 1 Tab 2 Tab 3 Tab 4 Tab 5

Use selected

Tab 1 ▼

Use selected

Tab 2

Use selected

Entity browser selectoin display examples

Entity browser example 1: A 2x7 grid of squares with an 'X' inside. The top-left square is shaded gray. Below the grid is a button labeled "Add to selection". At the bottom, a shaded area contains five squares and a button labeled "Use selected".

Entity browser example 2: A 4x4 grid of squares with an 'X' inside. The top-left square and two squares in the second row are shaded gray. To the right is a panel with five checkboxes and horizontal lines. Below the grid is a button labeled "Add to selection". Below the panel is a button labeled "Use selected".

Entity browser example 3: A 4x4 grid of squares with an 'X' inside. The top-left square and two squares in the second row are shaded gray. To the right is a panel with four bullet points and horizontal lines. Below the grid is a button labeled "Add to selection". Below the panel is a button labeled "Use selected".