

# **Clanavi**

## **Architecture Patterns – Pluggable Any Clouds**

### **Q4 2010**

11/21/2010

Open Operability Project

DOCOMO USA Labs, Inc.

# Directory Structure

aws

- +aws.module
- +modules
  - +aws\_ec2/aws\_ec2\_api.\*
  - +aws\_ec2/aws\_ec2\_lib.\*

cloud

- +cloud.module
- +modules
  - +cloud\_activity\_audit/cloud\_activity\_audit.\*
  - +cloud\_alerts/cloud\_alerts.\*
  - +cloud\_auto\_scaling/cloud\_auto\_scaling.\*
  - +cloud\_billing/cloud\_billing.\*
  - +cloud\_cluster/cloud\_cluster.\*
  - +cloud\_failover/cloud\_failover.\*
  - +cloud\_inputs/cloud\_inputs.\*
  - +cloud\_pricing/cloud\_pricing.\*
  - +cloud\_resource\_allocator.\*
  - +cloud\_scripting/cloud\_scripting.\*
  - +cloud\_server\_templates/cloud\_server\_templates.\*

iaas

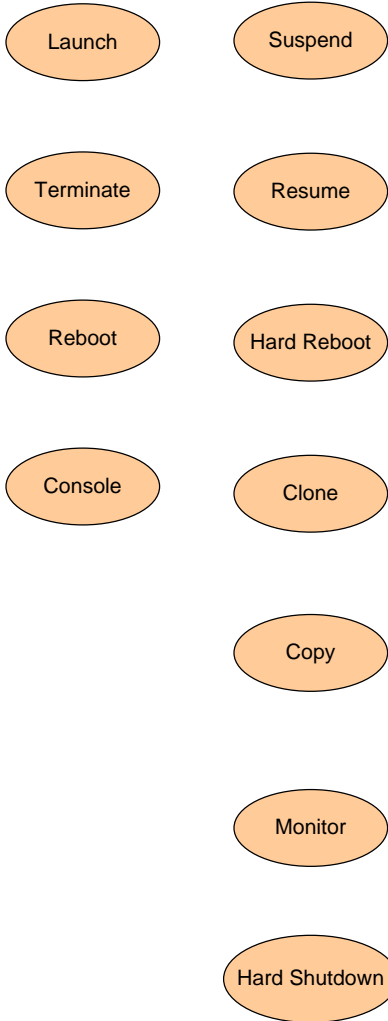
- +modules
  - +amazon\_ec2/amazon\_ec2.\*
  - +openstack\_nova/openstack\_nova.\*
  - +libvirt\_support/libvirt\_support.\*
  - +xcp/xcp.\*

# Use Case Diagram

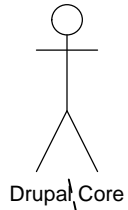
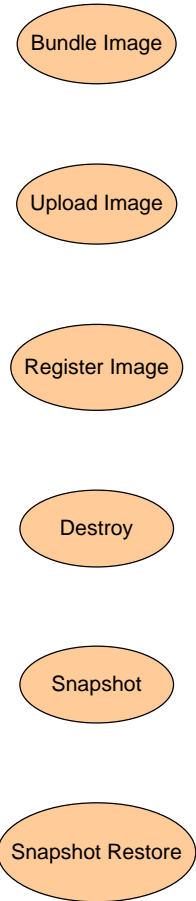
Drupal

## Cloud Abstraction Operations

### Instance Operations

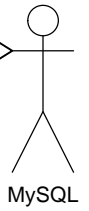


### Image Operations



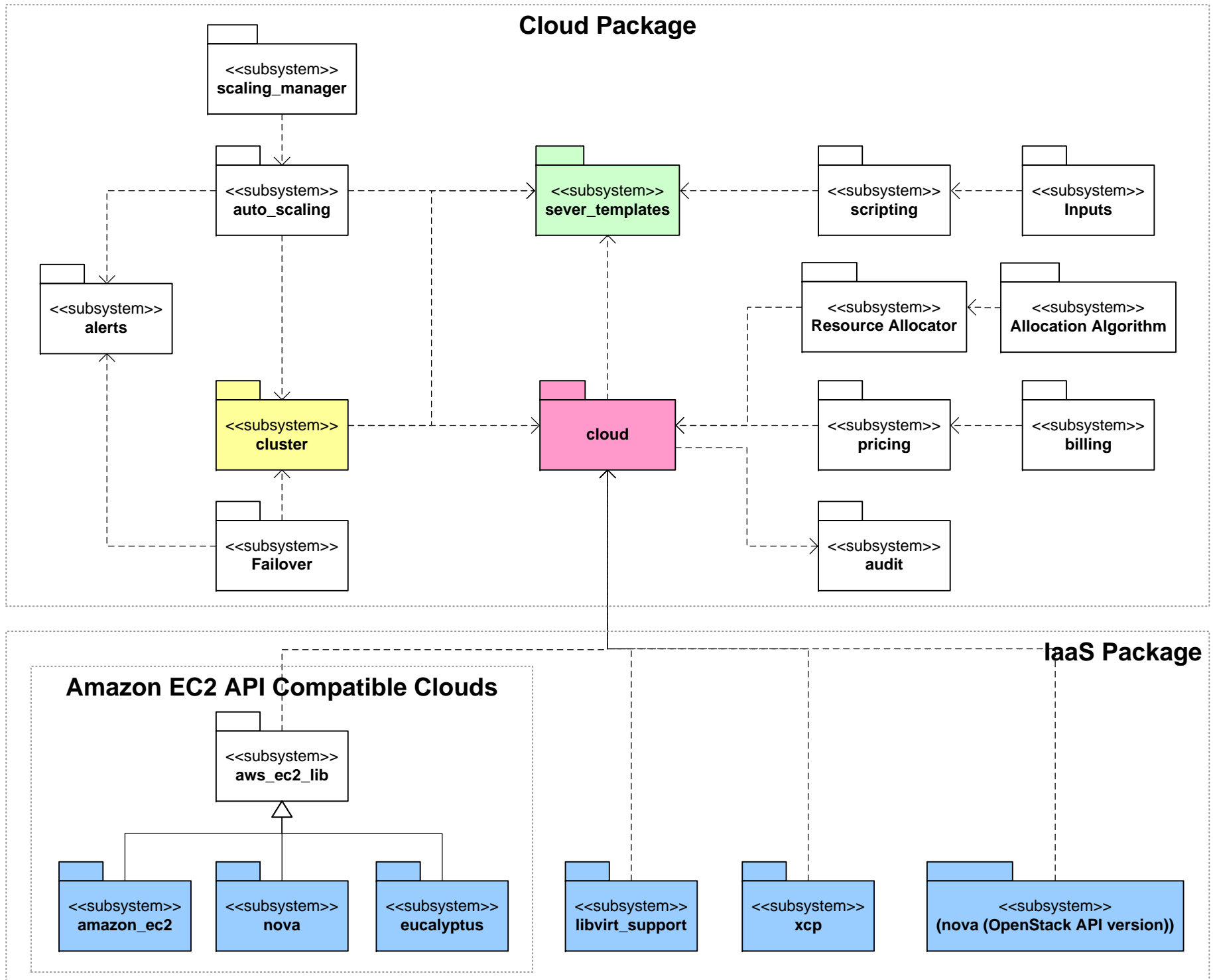
AuthN and AuthZ  
Module Management

<<uses>>

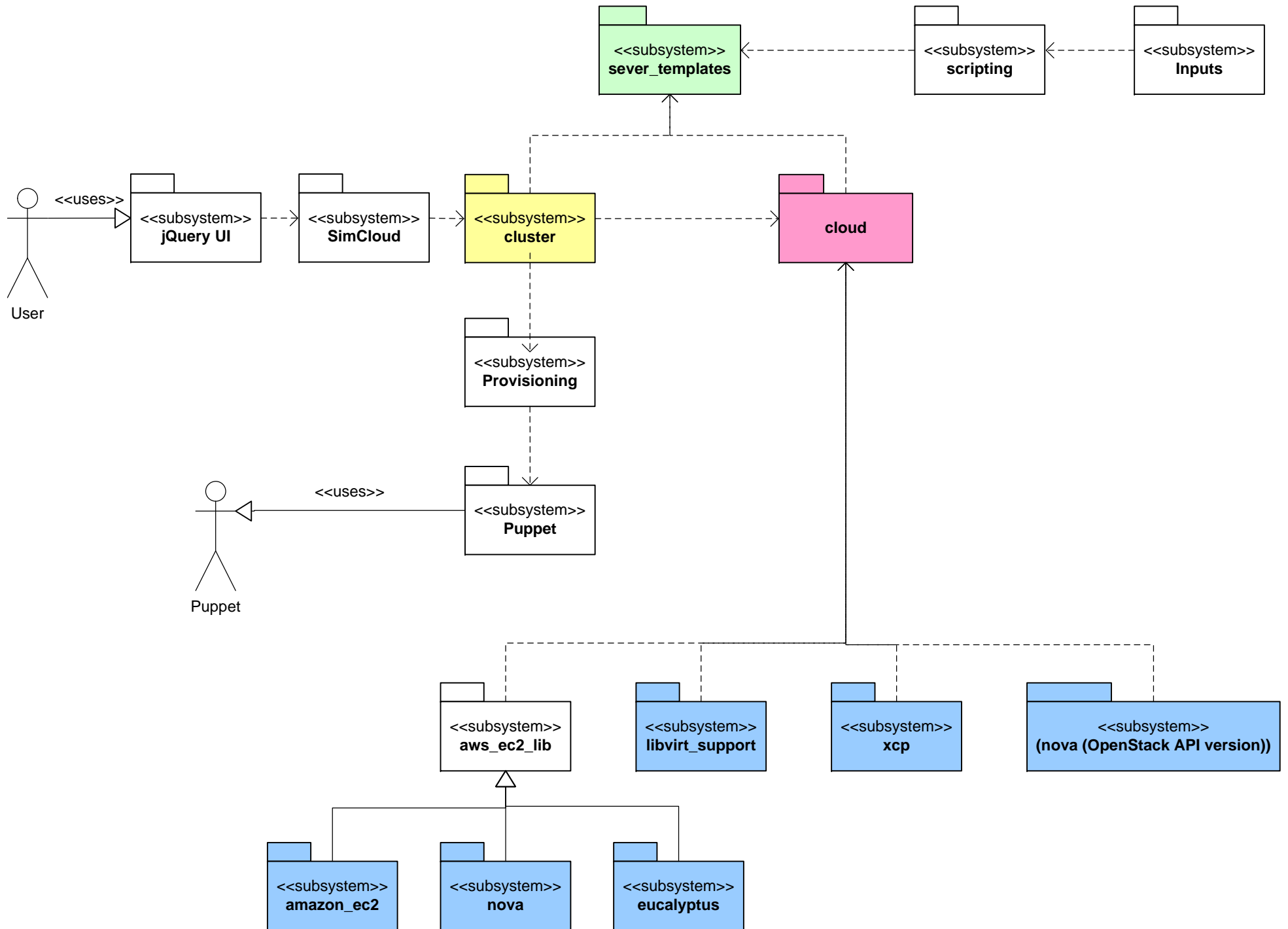


# Module Diagram

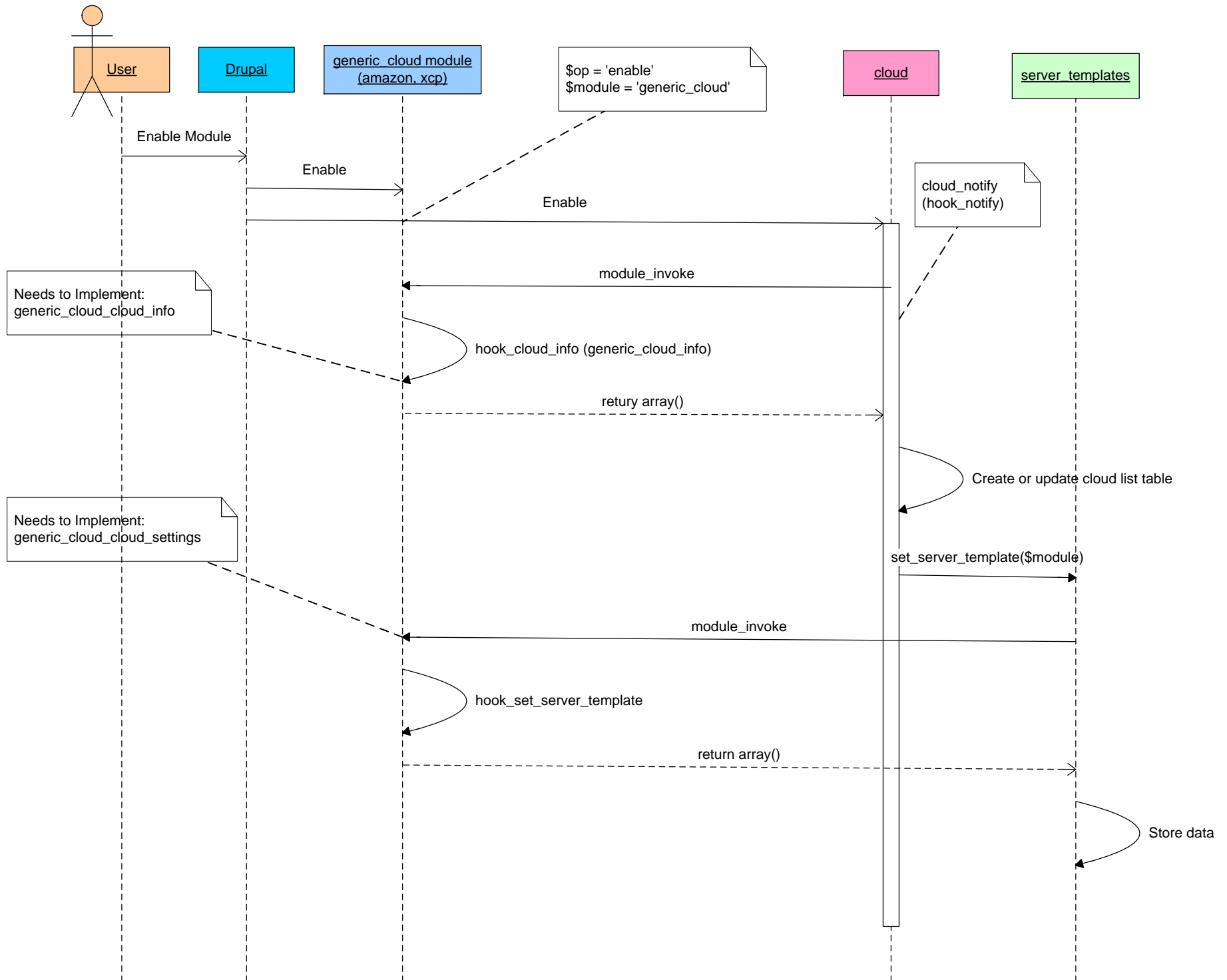
Dependency  
----->



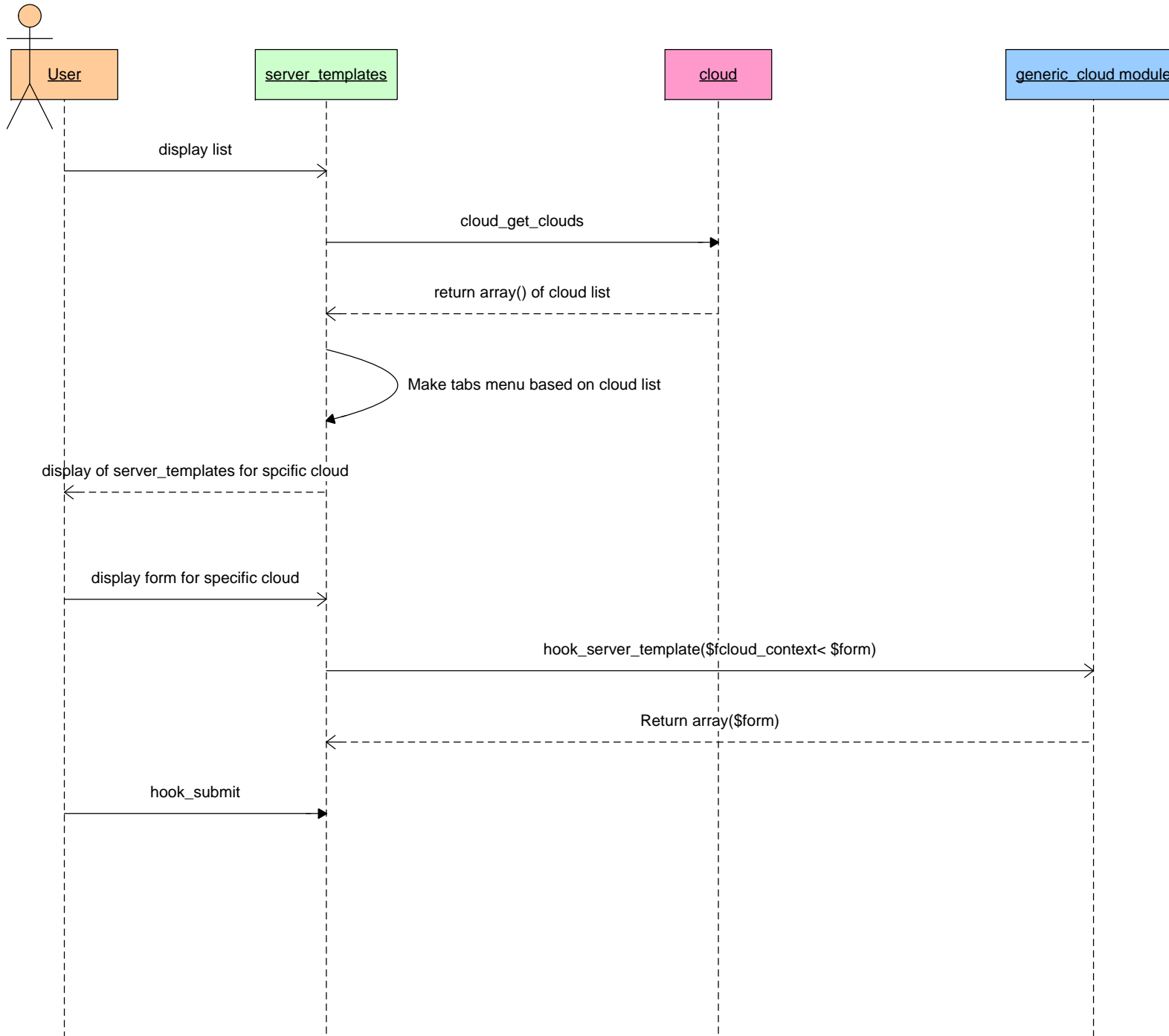
# Module Diagram (for SimCloud)



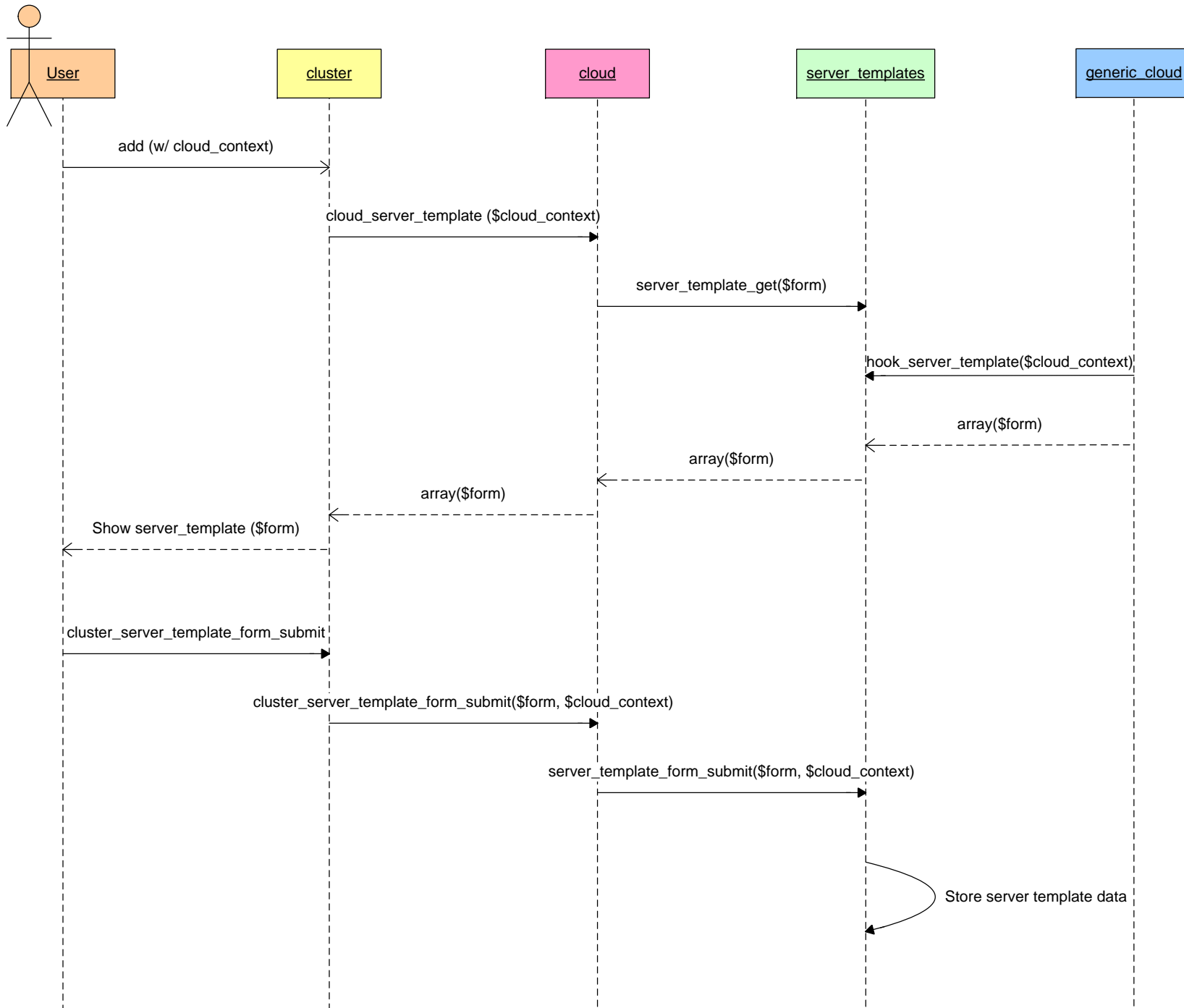
# Cloud Module Provisioning Sequence



# Server Templates Sequence



# Cluster Operation Sequence





# Cloud Operations (Launch Instance)

